

Your apprenticeship at Roche.

Learn. Future. Roche.

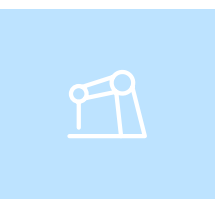
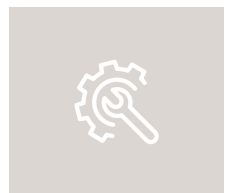
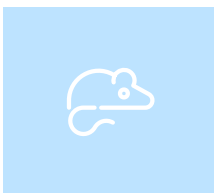
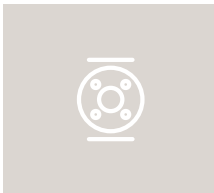
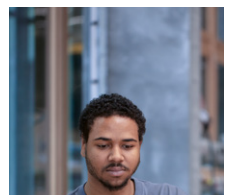
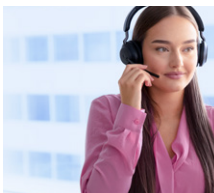
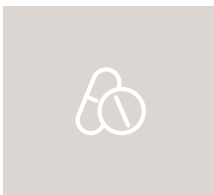
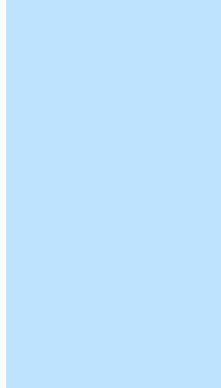


Welcome to Roche!

This brochure gives you a small but informative insight into the diverse range of vocational apprenticeships that start at Roche Basel/Kaiseraugst every August.

Roche is a world-leading, research-focused company headquartered in Basel, where more than 100,000 people in over 100 different countries are working to develop innovative, efficient medicines for patients from all over the world. Science and innovation are the focus of our daily work.

Become one of the 300 apprentices in 15 professions who work at our Basel/Kaiseraugst site, become part of this exceptional company with a track record spanning more than 125 years and an excellent international reputation – become part of the Roche family.



Our Apprenticeships



Laboratory Technician, specialized in biology, with Federal VET Diploma



Laboratory Technician, specialized in chemistry, with Federal VET Diploma



Chemical and Pharmaceutical Technologist with Federal VET Diploma



Commercial Employee with Federal VET Diploma



Information Technologist with Federal VET Diploma



Mediamatics Technician with Federal VET Diploma



Plant and Apparatus Construction Technician with Federal VET Diploma



Automation Technician with Federal VET Diploma



Information and Documentation Specialist with Federal VET Diploma



Animal Care Technician with Federal VET Diploma



Medical Practice Assistant with Federal VET Diploma



Architectural Draughtsperson with the Federal VET Diploma



Logistics Technician with Federal VET Diploma



Polymechanic Technician with Federal VET Diploma



Technical Designer with Federal VET Diploma

A more detailed overview of our apprenticeships can be found here:





Benefits and services.

Fitness and health

A sports club, a large indoor pool and modern fitness centers will keep you in shape during your apprenticeship.

Living at Roche

The residences for our apprentices are located in the immediate vicinity of the Roche site in Basel and the vocational school.

The apprentices who do not live in the Basel region can stay there free of charge during their training during the week and are supervised by social education teachers during this time.

Leisure and culture

With the Roche ID card you can get discounts in various specialist shops. In addition, the Entrez! culture pass is also available. Preferential conditions for various events, such as visits to cinemas, concerts, musicals, theatres and many other events.

Other benefits

At the beginning of your apprenticeship, Roche will provide you with personal IT equipment (laptop, iPad, including accessories) and cover the costs for all the school materials required. In addition to your salary, you will receive a contribution for your commute.

Learning locations during your training.

Vocational training school

As part of the joint training courses, you will learn to combine school-based learning with practical learning. This way, you will be taught basic professional skills that will prepare you for your practical work.

Workplace

Here, depending on your level of training, you will work on ongoing daily operations and continue to develop your practical skills according to the motto “learning by doing”.

Vocational college

Here you can gain professional competence for your chosen profession. The general education courses encourage your personal development and general education.

Professional certification

A vocational baccalaureate (part-time or as a full-time year after training) is possible in all Roche apprenticeships. We will discuss the options with you in the interview.

Offers after your apprenticeship.

After you have successfully completed your apprenticeship, you will find numerous attractive paths that Roche can also provide support with for individuals showing the appropriate dedication and potential.

Training

Permanent employment at Roche

Qualification year at Roche

Year abroad (6–12 months)

Studying with Roche: financially supported part- or full-time studies at a university of applied sciences or other university, including a vocational baccalaureate or the Swiss Passarelle if it still needs to be completed



The path to your apprenticeship.



You can submit your complete **application documents** electronically. A complete application includes a curriculum vitae, certificates from the last two semesters and a letter of motivation, as well as the Check S2 if you completed your education in Northwestern Switzerland.



In the **interview**, we want to get to know you better as a person. We are curious to find out why you want to do the specific apprenticeship you have selected and why you have chosen Roche. It is also important to us that you also get an impression of us and can then decide whether you would like to complete your apprenticeship at Roche.



After written or oral acceptance, we will prepare your **apprenticeship contract** and provide you with any further information.

Help with your choice of career.

Roche uses **Multicheck** in its recruitment process, which you can complete at a test center of your choice. If you have successfully submitted your application, and you meet the requirements profile in the first stage, we will send you a request to register for the test. The cost of the test will be covered by Roche. Multicheck includes various modules based on the requirements of the apprenticeship – our aim is to find out whether you meet the requirements profile for the vocational apprenticeship. The test will take approx. 3.5 hours and serves as a basis for the interview. You can prepare by answering sample questions on the [Multicheck](#) website.

In the **work trial**, you can try your desired job in practice, get to know the working environment and your future supervisors and, of course, ask all your questions. You will receive more details during the interview.

Apply now:



Are you still unsure what you want to be? Here you will find various offers that can help you make your decision:

Here are two examples from our wide range:



myTalents public career selection course

This offer from the Experio Roche school laboratory for students of working age (7th–9th grade) not only provides information about professions, but also makes them tangible!



Try out a career

The Career Taster gives you a brief insight into our apprenticeships. Depending on the apprenticeship, you can experience it up close for two to three hours virtually or for a whole or half day on site.





basel.lehre.roche.com/en



go.roche.com/tiktok



go.roche.com/insta

F. Hoffmann-La Roche AG

Berufsbildung Basel/Kaiseraugst
4070 Basel, Schweiz

+41 (0)61 688 22 33

basel.berufslehre@roche.com